



JCW Acoustic Deck 28/32

Chipboard based acoustic deck overlay boards for timber floors.

The Products

At just 28mm or 32mm thickness, these acoustic decks minimise construction height whilst still complying with statutory regulations. These P5 t&g chipboard based acoustic decks are ready for final floor installation.

The Facts

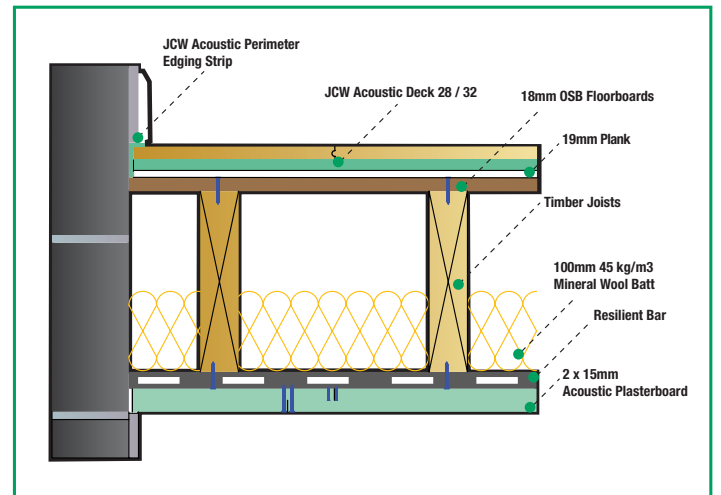
- Chipboard based resilient overlay deck for timber floors
- Ideal for refurbishments where floor height is an issue
- Approved Document E (England & Wales) – compliance by Pre-Completion Testing
- Approved Section 5 (Scotland) – compliance by Performance Testing
- P5 t&g chipboard laminated to an acoustic resilient layer
- Economical and easy to fit

Specification

	Deck 28	Deck 32
Composition	18mm P5 (V313) t&g chipboard with 10mm pre-bonded acoustic resilient layer	22mm P5 (V313) t&g chipboard with 10mm pre-bonded acoustic resilient layer
Thickness	28mm	32mm
Sheet Sizes	28mm x 600mm x 2400mm	32mm x 600mm x 2400mm
Sheet Weights	18.8 kg	21.8 kg

Acoustic Performance

Product Description	Impact Performance	Airborne Performance
	L'nw	Rw + Ctr
Deck 28	56 dB	54 dB
Deck 32	56 dB	54 dB



Installation

Our specialist acoustic installation teams are available across the UK. These skilled and experienced tradesmen understand acoustic materials and how to fit them quickly and correctly. The result is a cost effective service which ensures the acoustic integrity of your project.

Ancillary Products

- JCW Waterproof Adhesive
- JCW Acoustic Sealant
- JCW Perimeter Edging Strip

For further details or if in doubt that a floor construction will meet Building Regulations, please call John C Wilkins Acoustic Supplies on 01204 548400



APPLICATIONS

- Offices • Meeting Rooms • Hotels • Conference Centres
- Leisure Centres • Schools • Restaurants • Showrooms

JOHN C WILKINS ACOUSTIC SUPPLIES

Units 32-34, Waters Meeting Development,
Britannia Way, Bolton BL2 2HH
T: 01204 548400 F: 01204 366960