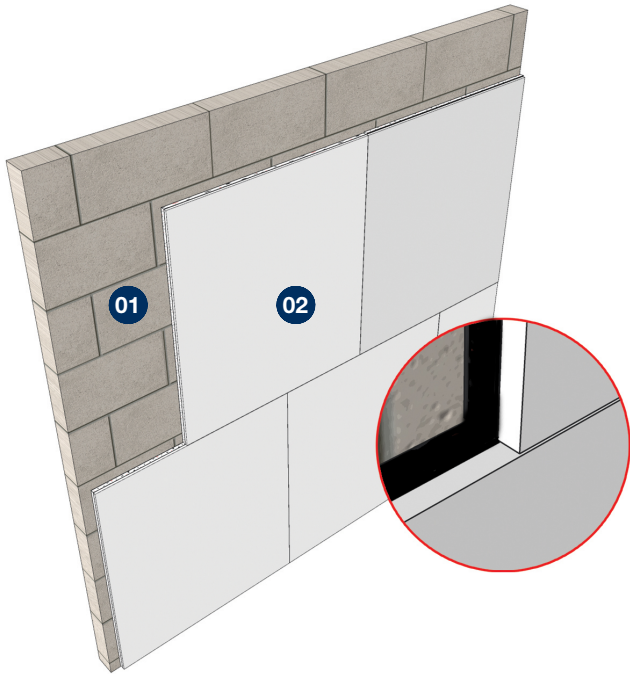
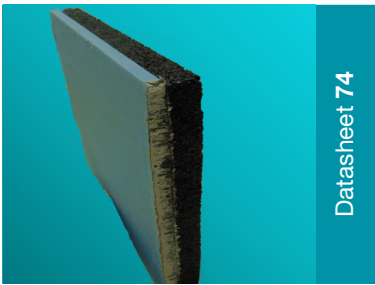


# Acoustic Silent Board Plus

ENHANCED ACOUSTIC WALL LINER



01 100mm Lightweight Block

02 JCW Acoustic Silent Board Plus

All board joints may be sealed (if required) with JCW Acoustic Sealant. At wall, floor & ceiling edges leave a 5mm gap and fully fill with JCW Acoustic Sealant.



<b>Product Code: 1476</b>	
Acoustic overlay improvement board for new and existing walls	
Acoustic plasterboard laminated to an acoustic resilient layer	
<ul style="list-style-type: none"><li>• Can be bonded directly to existing brick, block and stud walls.</li><li>• Easy to install</li><li>• Could be used as a remedial solution for sound test failures</li><li>• Plasterboard surface ready for decoration</li></ul>	
<b>Sheet Size:</b> 32.5mm x 1200mm x 1200mm (1.44 m <sup>2</sup> ) <b>Weight:</b> 40.14 kgs	
<b>Assists attainment to 'Part E' regulations for refurbishments and 'change of use'</b>	
<b>Method of Compliance</b> Approved Document E/ Section 5 Scotland	<b>Ancillary Products</b> 1380 JCW Grab Adhesive (310ml) Various JCW Fire & Acoustic Socket Box Inserts 1379 JCW Pro-Gun

Domestic Dwellings | Offices | Hotels | Conference Centres | Leisure Centres | Schools | Restaurants | Showrooms



Unit 32-34 Waters Meeting Development  
Britannia Way, Bolton, BL2 2HH

Sales helpline **01204 548400**  
8.30am - 5.00pm Monday to Friday

[sales@acoustic-supplies.com](mailto:sales@acoustic-supplies.com)  
[www.acoustic-supplies.com](http://www.acoustic-supplies.com)

## Tools/Accessories required

- Sharp trimming knife
- Handsaw
- JCW Acoustic Sealant
- JCW Approved Bonding Adhesive

## Installation Notes

1. All skirting and coving is to be removed.
2. Walls should be flat and/or prepared to accept the Silent Board Plus.
3. The first JCW Silent Board Plus is fitted in the LH or RH corner using a 5mm spacer to isolate the JCW Silent Board Plus from the surrounding floor, ceiling and walls. These gaps (along with any excess gaps between the boards) should then be fully filled with JCW Acoustic Sealant once the final boards are in place.
4. Silent Board Plus is bonded to the wall using JCW Approved Bonding Adhesive. The adhesive should be applied to the rubber resilient layer in a straight line across the top of the board and then at approx 150mm centres and finish at the bottom of the board. (Approx 1 tube per 1.5 boards).
5. Once the first JCW Silent Board Plus is fitted in position, continue along the bottom row filling any gaps between the boards with JCW Acoustic Sealant. Plan the bottom row to allow for cuts and staggered joints on all of the rows above.
6. JCW Silent Board plus can be plaster skimmed (or covered with heavy duty building paper if preferred.)

**Disclaimer:** The product and installation information contained in this Data Sheet and General Installation Guide is to the best of our knowledge correct. Please contact us direct, prior to starting works, for the latest information to enable confirmation of the specification.

Domestic Dwellings | Offices | Hotels | Conference Centres | Leisure Centres | Schools | Restaurants | Showrooms



Unit 32-34 Waters Meeting Development  
Britannia Way, Bolton, BL2 2HH

Sales helpline **01204 548400**  
8.30am - 5.00pm Monday to Friday

[sales@acoustic-supplies.com](mailto:sales@acoustic-supplies.com)  
[www.acoustic-supplies.com](http://www.acoustic-supplies.com)