

Fire & Acoustic Socket Box Inserts

ANCILLARY PRODUCTS



NBS Source
PARTNER

Datasheet 24



Designed to help maintain the fire resistance and acoustic integrity of walls

- suitable for both plastic and metal socket boxes
- easy to install putty pad alternative

Product Code

1224	Single x 35mm deep
1223	Double x 35mm deep
1226	Single x 47mm deep
1225	Double x 47mm deep

Fire Test & Assessment Reports

- Fire tested to BS EN 1366-1/13664-2 for up to 120 minutes
- Acoustic tested BS EN ISO 140-3:1995 and BS EN ISO 717-1:1997
- Air leakage tested to BS EN 1026:2000 over a pressure range of 2-50 Pa

Domestic Dwellings | Offices | Hotels | Conference Centres | Leisure Centres | Schools | Restaurants | Showrooms

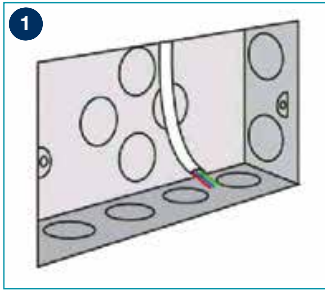


Unit 32-34 Waters Meeting Development
Britannia Way, Bolton, BL2 2HH

Sales helpline **01204 548400**
8.30am - 5.00pm Monday to Friday

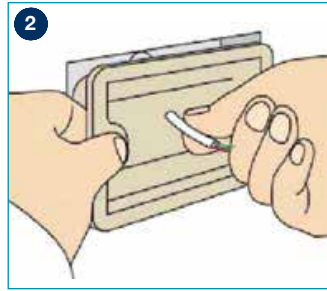
sales@acoustic-supplies.com
www.acoustic-supplies.com

Installation Guide Fire & Acoustic Socket Box Inserts



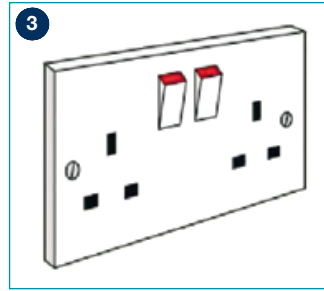
Step One:

Pull through cable and make a small hole through insert.



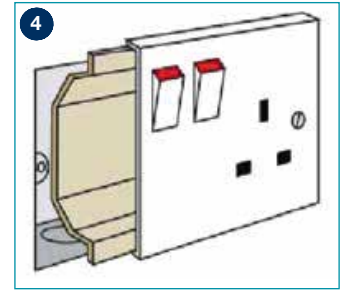
Step Two:

Pass cable through insert and fit insert into socket box.



Step Three:

Fit socket cover as normal, screws can pass through the insert material.



Step Four:

The flange of the insert should be hidden by the socket cover - any rough edges can be trimmed.

Note: The socket insert must be installed so that the flange sits proud of the plasterboard

Domestic Dwellings | Offices | Hotels | Conference Centres | Leisure Centres | Schools | Restaurants | Showrooms