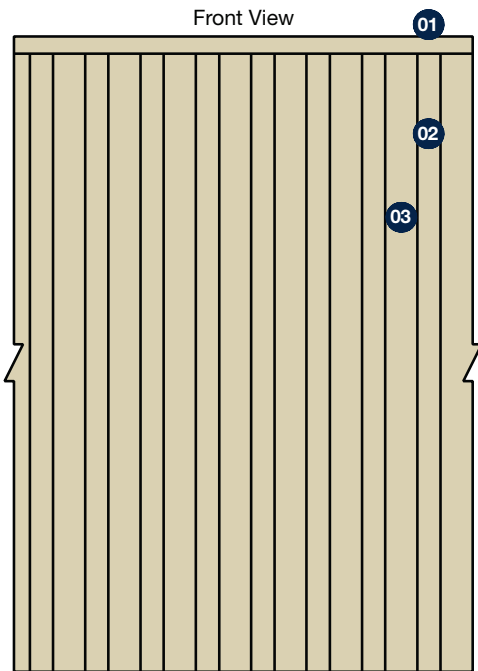


# JCW Sound Traffic Barrier

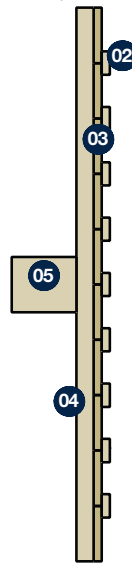
## ACOUSTIC FENCING (MAX HEIGHT 6M)



Datasheet 48



Plan View  
(Capping omitted)



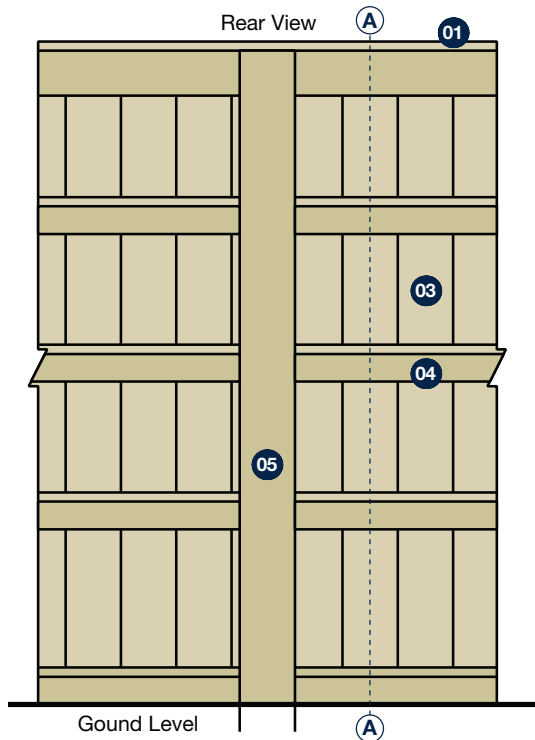
- 01 Capping Rail
- 02 Cover Strips
- 03 Boards
- 04 Rail
- 05 Post

### The Product

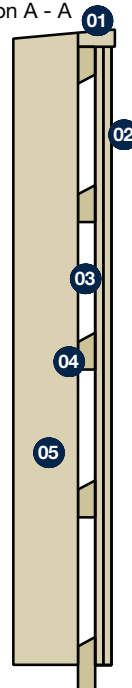
JCW Sound Traffic Barriers have been specifically designed to provide the same level of noise protection as the JCW Reflective Sound Screen for especially demanding highway and commercial applications.

### Applications

- Highways
- Commercial Premises
- Industrial Sites
- Sports Venues



Section A - A



### Please Note

1. Structural calculations may be required by qualified persons, no responsibility can be accepted by using this design without professional advice. Max height of 6 metres
2. Design in accordance with specification for Highway Works Clause 2504. Treatment to Sector Scheme 4.
3. Traffic Barrier fitted to timber posts (for illustration purposes only). Steel posts can be an alternative.
4. Height of traffic barrier variable to suit specific locations. Post centres at 2.4m or 3.0m unless otherwise specified.
5. Conforms and tested to BS EN 1793. Also tested and complies to BS EN 1794-1 and BS EN 1794-2.
6. Complies with Highways Sector Scheme 2C for the prefabrication of environmental barriers.

Domestic Dwellings | Offices | Hotels | Conference Centres | Leisure Centres | Schools | Restaurants | Showrooms



Unit 32-34 Waters Meeting Development  
Britannia Way, Bolton, BL2 2HH

Sales helpline **01204 548400**

8.30am - 5.00pm Monday to Friday

sales@acoustic-supplies.com

**www.acoustic-supplies.com**

**JCW Reflective Sound Screen / Traffic Barrier** BS EN 1793-2: 1998. Acoustics - Road traffic noise reducing devices.  
Test method for determining the acoustic performance.

**Size:** 8.64m<sup>2</sup>

**Source Room**

**Receiving Room**

**Volume:** 136m<sup>2</sup>

**Volume:** 220m<sup>2</sup>

**Condition:** Clean

**Condition:** Clean

**Type:** Small Reverberation Room

**Type:** Large Reverberation Room

**Location:** Acoustic Transmission Suite

**Location:** Acoustic Transmission Suite

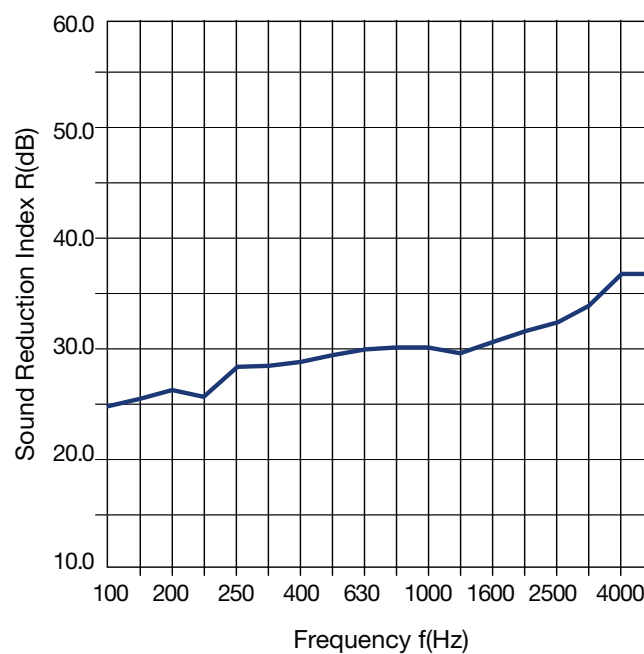
**Temperature:** 17.80°C

**Humidity:** 58.6%

**DL<sub>α</sub>:** 30

**Category:** B3

Frequency HZ	R
100	24.7
125	25.3
160	26.3
200	25.8
250	28.5
315	28.4
400	29.0
500	29.6
630	30.0
800	30.1
1000	29.8
1250	29.7
1600	30.6
2000	31.6
2500	32.1
3150	33.7
4000	36.9
5000	37.1



Test results for JCW Reflective Sound Screen / Traffic Barrier issued by:

**University of Salford (Acoustics Test Laboratory)**

UKAS accredited test laboratory No. 1262

Test reference number: AC09/215/06

Domestic Dwellings | Offices | Hotels | Conference Centres | Leisure Centres | Schools | Restaurants | Showrooms



Unit 32-34 Waters Meeting Development  
Britannia Way, Bolton, BL2 2HH

Sales helpline **01204 548400**

8.30am - 5.00pm Monday to Friday

sales@acoustic-supplies.com

**www.acoustic-supplies.com**